



Multi-Turn Gas Motor Actuator

The Gevalco "Multi-Turn Gas Motor Actuator" features the newest technology for utilizing unregulated pipeline gas to automatically operate multi-turn or quarter-turn valves. Capable of operating with pressures up to 1500 psi, the Gevalco "Multi-Turn Gas Motor Actuator" is supplied as a complete

stand-alone valve control system for either

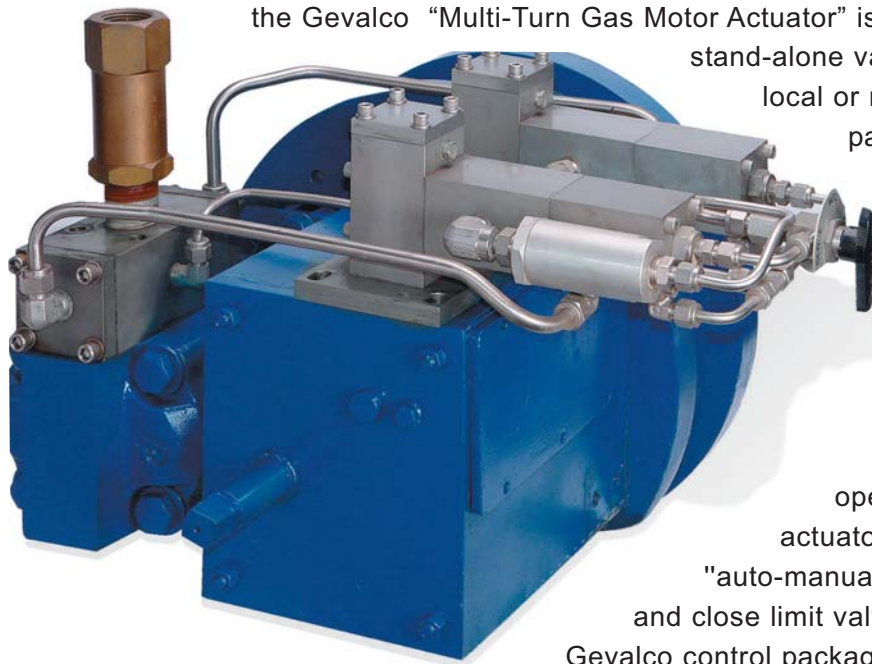
local or remote operation. The compact, lightweight gas actuator

is mounted directly on the gear operator normally

supplied for handwheel operation. An economical adapter, specific to the valve gear-box, connects the gas motor actuator directly to the gear

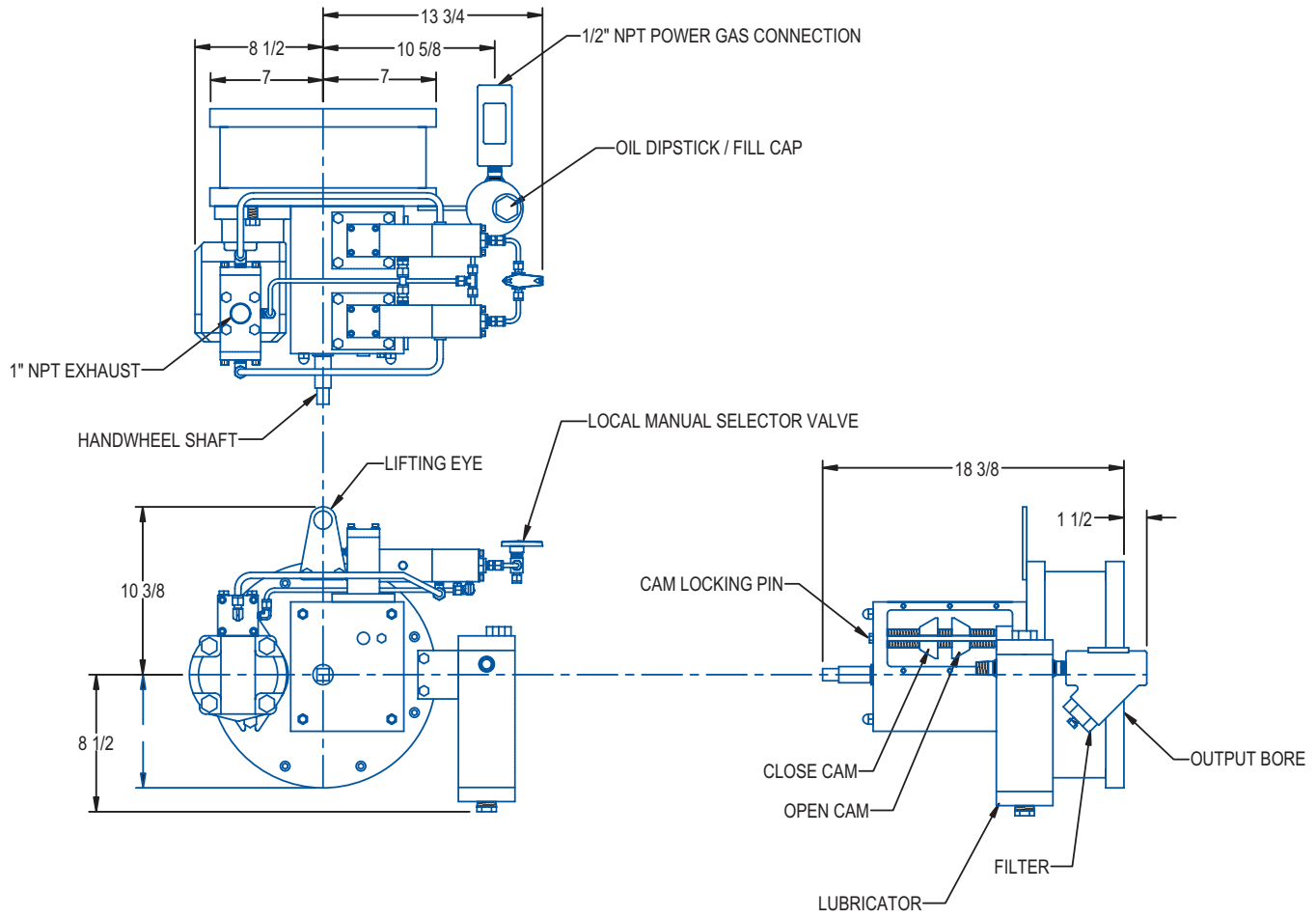
operator handwheel shaft. All actuators are supplied with a local "auto-manual" control station with open and close limit valves. In addition, other proven

Gevalco control packages, such as, Remote Electric, Station Bypass, and Line Break control modules can be provided for operation with the Gevalco "Multi-Turn Gas Motor Actuator".



The Gevalco Advantage

- Operates with 100 to 1500 psi unregulated gas.
- Lightweight - 250 lbs.
- Reliable, durable gear motor for improved efficiency and less gas consumption.
- All control elements are constructed of marine-grade hard-anodized aluminum and stainless steel for maximum corrosion resistance and longer cycle life.
- No special tools required for limit valve adjustments.
- Adapter is machined to match specific requirements of the supplied valve gear operator.
- Allows for manual handwheel operation.
- Optional speed controls.
- Optional oil mist extractor.



GAS MOTOR ACTUATOR WITH TC2 CONTROL
ORDERING INFORMATION

GM - X (DRIVE GEAR RATIO) - X (TIMING GEAR RATIO, # OF TURNS) - X (TC2 CONTROL) - X (SCHEMATIC)

<p>GAS MOTOR ACTUATOR</p> <p>6 - 6:1 10 - 10:1 15 - 15:1</p>	<p>3 - 3:1, 135 TURNS 7 - 7:1, 330 TURNS 15 - 15:1, 690 TURNS 30 - 30:1, 1390 TURNS</p>	<p>HP - HIGH PRESSURE PILOT, MANUAL LP - LOW PRESSURE PILOT, MANUAL LPG - LOW PRESSURE PILOT, MANUAL, GO SWITCH HPG - HIGH PRESSURE PILOT, MANUAL, GO SWITCH HPW - HIGH PRESSURE PILOT, MANUAL, WESTLOCK HPWS - HIGH PRESSURE PILOT, MANUAL, WESTLOCK, SOLENOID</p>
--	---	---

EXAMPLE : GM-6-7-HP-1001-GM

GEVALCO

*PIPELINE VALVE AUTOMATION
PRODUCTS AND SERVICES AN ATI COMPANY*